

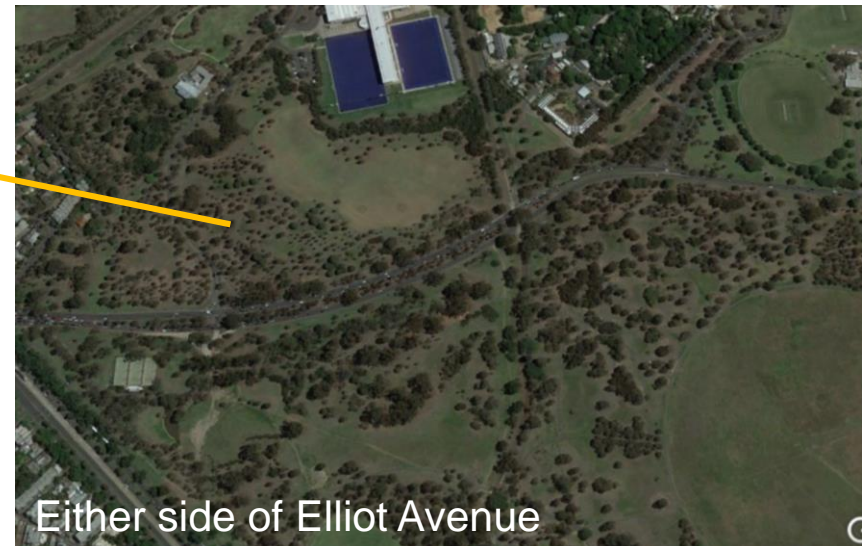
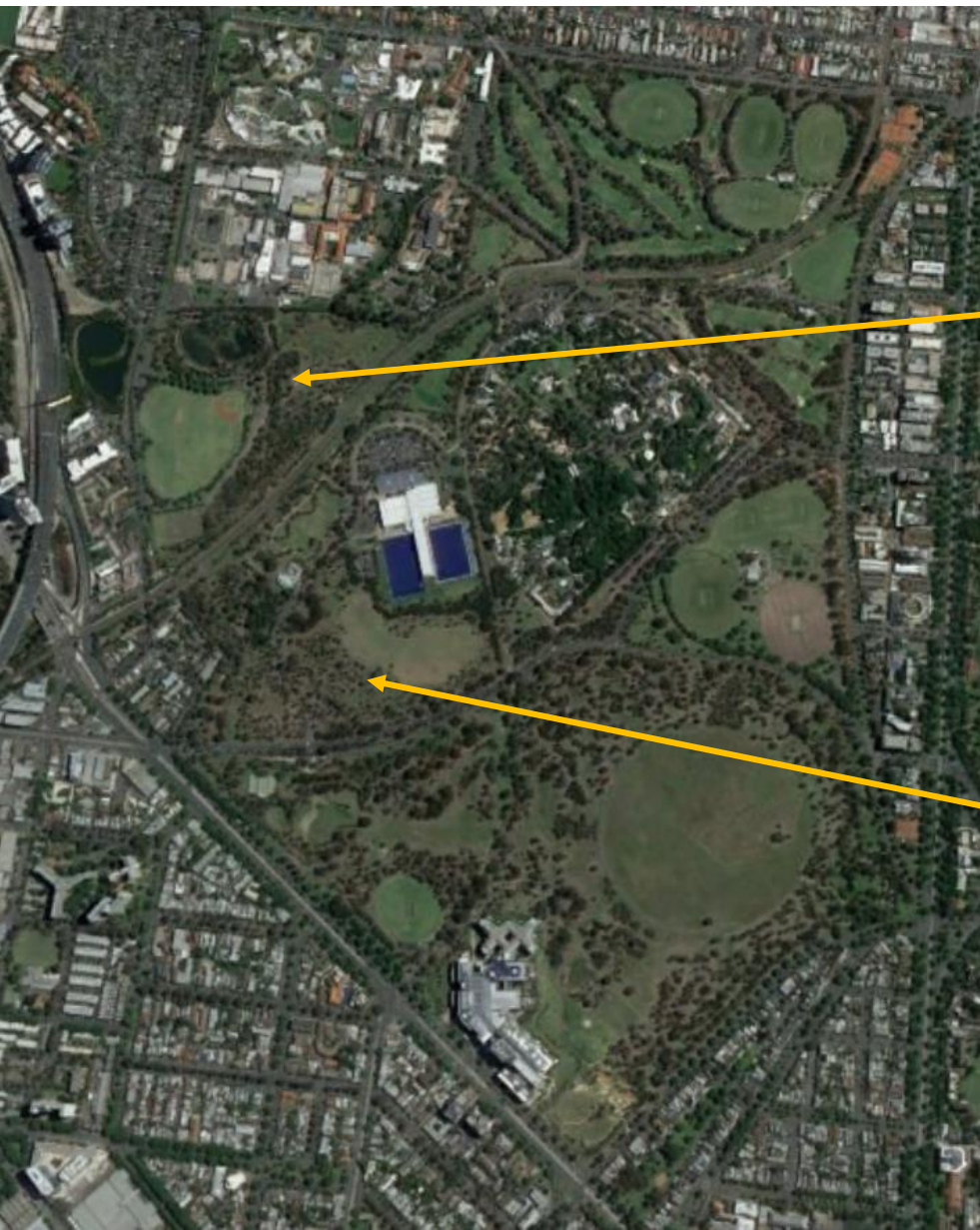
Birds of Royal Park

Dr Holly Kirk



birdlife
AUSTRALIA

Best places to see birds in Royal Park



Best places to see birds in Royal Park

Look for:

- Multiple levels of vegetation
- Native vegetation
- Dense vegetation
- Flowering plants

Open woodland and garden beds either side of Elliot Avenue

Area around Trin Warren Wetland and the White's skink habitat
Melbourne Zoo



How to go bird watching...



What to take?

- Binoculars
- Bird guide
- Water & snacks

How do you do it?

- Walk slowly & quietly
- Stop often
- Listen!!
- Look all around, watch for movement

How to identify birds...

Be patient with yourself! It takes time

Get to know your bird guide and how the species are grouped

Think about one or two features that stand out

Size, shape, beak shape & where you saw it are all important



How to identify birds...

Be patient with yourself! It takes time

Get to know your bird guide and how the species are grouped

Think about one or two features that stand out

Size, shape, beak shape & where you saw it are all important

Song can help too!



Golden whistler

Some other useful resources



ID Apps


Birdata
Ebird

Birds in Backyards

Atlas of Living Australia

“Melbirds”

<https://cindyehauser.wordpress.com/melbirds/>

A black and white magpie is perched on a light-colored tree branch. The bird has a black head and back, a white neck and underparts, and a long, straight, black and white beak. It is looking to the left. The background is a clear blue sky with some green leaves and branches visible.

Australian magpie
Magpie lark
Noisy miner
Masked lapwing
Rainbow lorikeet
Red wattlebird
Spotted dove
Crested pigeon
Pacific black duck

Over **140 birds species** have
been seen in Royal Park!

Amazing Royal Park residents



Spotted pardalote
(*Pardalotus punctatus*)

Very small!
Often higher in the tree
canopy

Call is very distinctive
and a good way to spot it

Feed on small insects,
especially psyllids

Amazing Royal Park residents



**New Holland
honeyeater**
(*Phylidonyris
novaehollandiae*)

Always on a sugar high
Often lower in the tree
canopy

Mostly feeds on nectar

Amazing Royal Park residents



Bell miner
(*Manorina
melanophrys*)

Easier to hear rather
than see.

Big colony in
Melbourne Zoo
High in the canopy

Feeds on small insects,
especially psyllids (and
lerps)

Amazing Royal Park residents



Red-rumped parrot
(*Psephotus*
haematonotus)

Can be hard to see as
well camouflaged.
Often in small flocks on
the turf

Feed seeds!

Amazing Royal Park residents



Tawny frogmouth (*Podargus strigoides*)

Large brown bird, active at night, hard to spot in day time

Breed down by the TWTB wetland

Feeds on invertebrates, sometimes small mammals, frogs & lizards

Amazing Royal Park residents



**White-browed
scrubwren**
(*Sericornis frontalis*)

Small brown bird, with
white eye markings

Often in heard before
seen

Feed on all
invertebrates

Amazing Royal Park residents



Welcome swallow
(*Hirundo neoxena*)

Small bird, fast
swooping flight,
perches in open

Build nests from mud

Feeds on flying insects

Special seasonal visitors to Royal Park



Musk lorikeet
(*Glossopsitta concinna*)

Looks like a rainbow lorikeet, but smaller and less noisy!

Visits during the winter

See them feeding in mixed flocks on the flowering eucalyptus all round RP

Special seasonal visitors to Royal Park



White-naped honeyeater
(*Melithreptus lunatus*)

Small, fast bird with a
distinctive red eye patch

Visits during the winter

See them feeding in large
flocks by gleaning insects
or on flowers during the
winter

Special seasonal visitors to Royal Park



Gang-gang cockatoo
(*Callocephalon fimbriatum*)

Looks like nothing else!
Females are all grey

Visits during the winter,
breeds at higher altitudes

Feeds on seeds, berries
and nuts. You can often
hear them crunching in the
canopy!

Special seasonal visitors to Royal Park



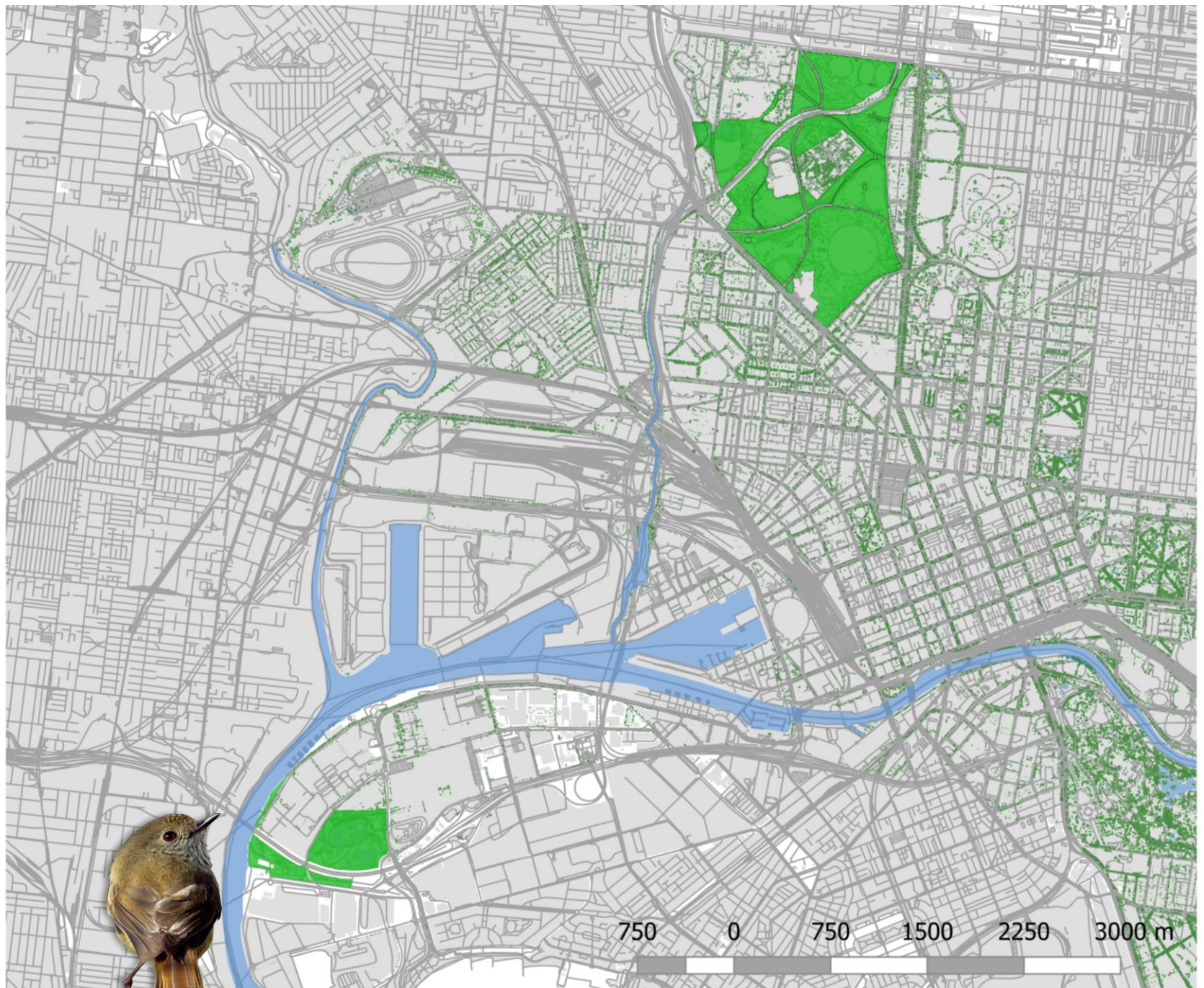
Pink-eared duck
(*Malacorhynchus membranaceus*)

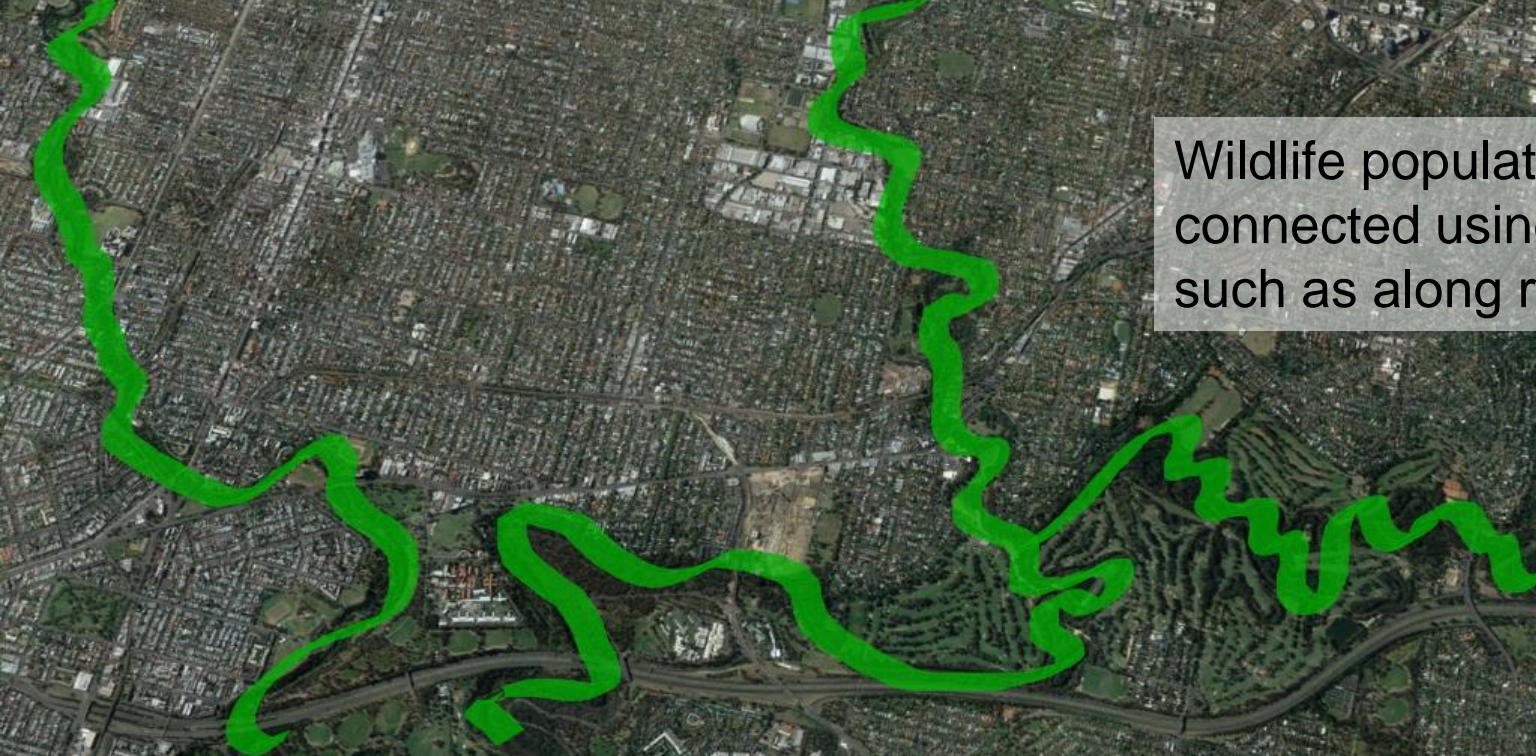
A very distinctive duck!
Small with a huge bill

Nesting over at the
Western Treatment Plant,
occasionally visits RP.

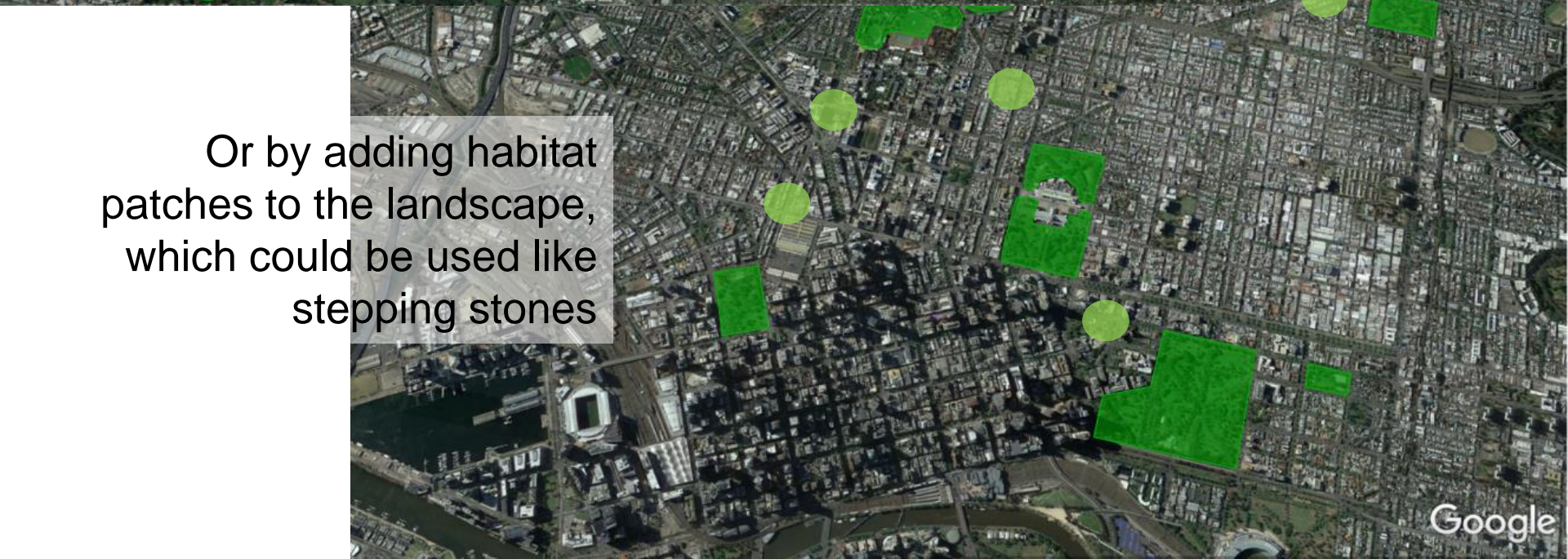
Feeds on aquatic
invertebrates







Wildlife populations could be connected using corridors, such as along rivers...



Or by adding habitat patches to the landscape, which could be used like stepping stones

How can you help our urban birds?

Plant native plants that provide resources in your gardens and balconies

Remember, lots of our birds eat insects, so providing insect food is good.

Keep cats inside at all times

Thanks to Michael Livingston for the beautiful bird photographs (@wtb_Michael)



Birds of Royal Park

Dr Holly Kirk



birdlife
AUSTRALIA